



European User Group Meeting

OncoDEEP[®] Kit

Housekeeping....



Meeting culture....

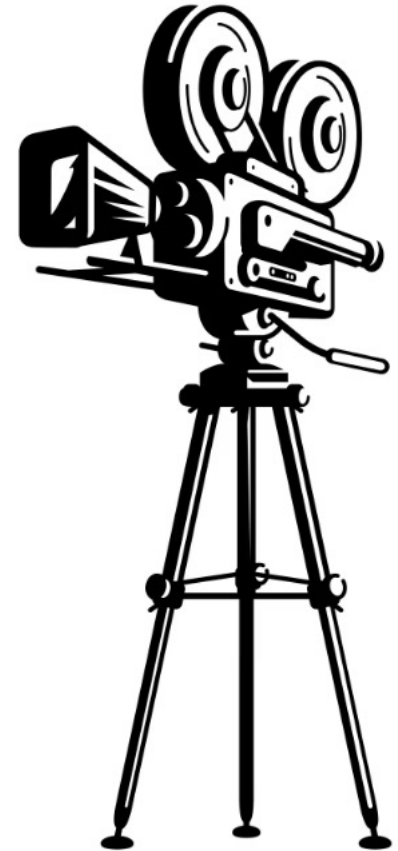


The Chatham House Rule is used around the world to encourage inclusive and open dialogue in meetings.

Used effectively, the Chatham House Rule helps to bring people together, break down barriers, generate ideas and agree solutions.

When a meeting is held under this rule, participants are free to use the information received but neither the identify nor the affiliation of the speaker(s), nor that of any other participant can be revealed.

Any party after this meeting may seek permission of other delegate/speakers to use their work but only with their direct and written permission.



Thank you to our partners





OncoDNA[®]
THE CANCER THERANOSTIC COMPANY

European User Group Meeting OncoDEEP[®] Kit

21st - 22nd October 2024

Welcome

Jean-Pol Detiffe
Founder, Chief Executive Officer
OncoDNA SA, Belgium

Welcome




● **Industrial pharmacist**, QP by training

● Serial entrepreneur from age of 30...

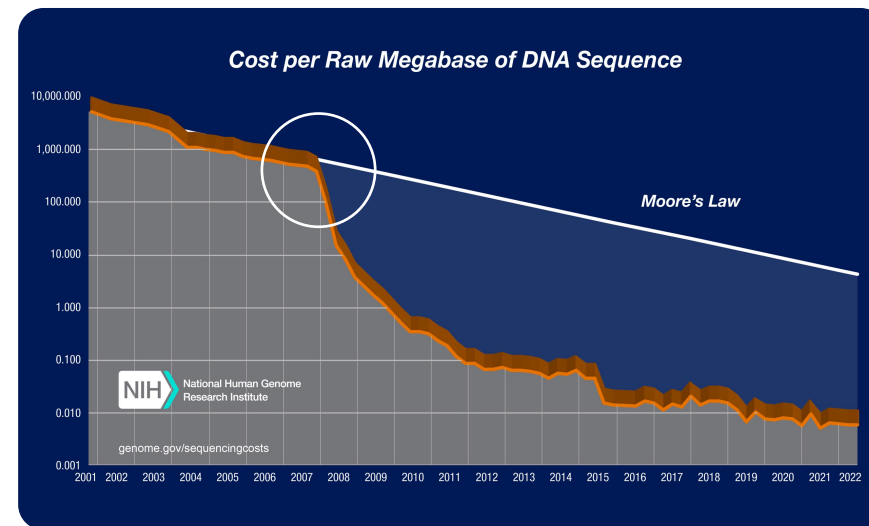
● **2004**, first DNA adventure 

- DNA service lab (Sanger and Affymetrix...),
- Fast technology evolution with NGS
- Quality focused (GLP certified, GMP, ISO, UK CE Mark etc)

● **In 2013**, focus patient 

- Focusing first on data
- Core team of DNA Vision for IT, BioITs, ...
- From centralized testing to empowering laboratories via kits

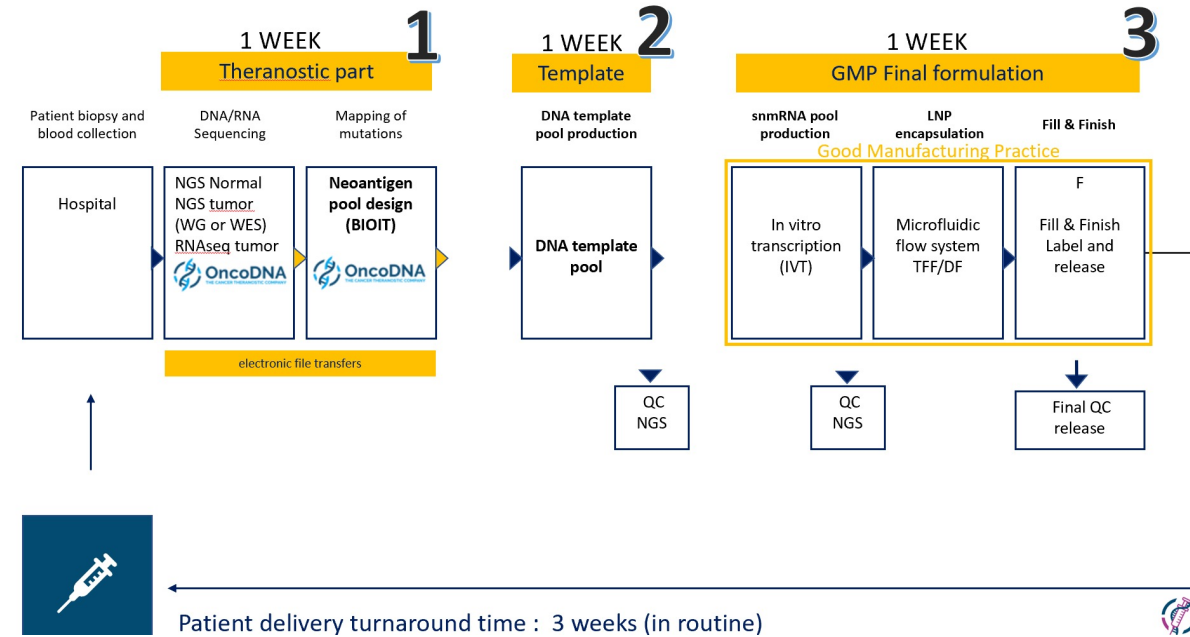
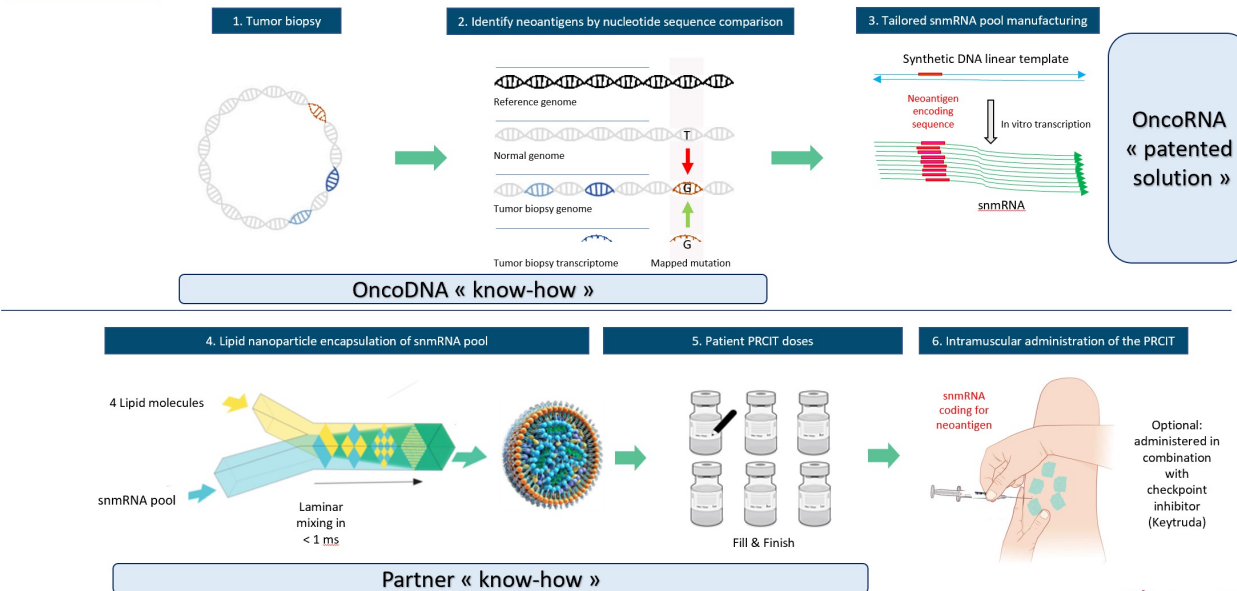
● And future, **2024** funding of 



Few Words about OncoRNA More info on www.oncorna.eu

- +/- 30% of tumour profiling have 'real' actionable/new treatments
- Future in 10 years or less there will be personalized cancer vaccines based on neoantigens
 - (Moderna in phase 3, Biontech phase 2)
- We see the 'big picture'
- We are ready for WG/Exome/full transcriptome...

Neoantigen specific Personal Cancer immunotherapy

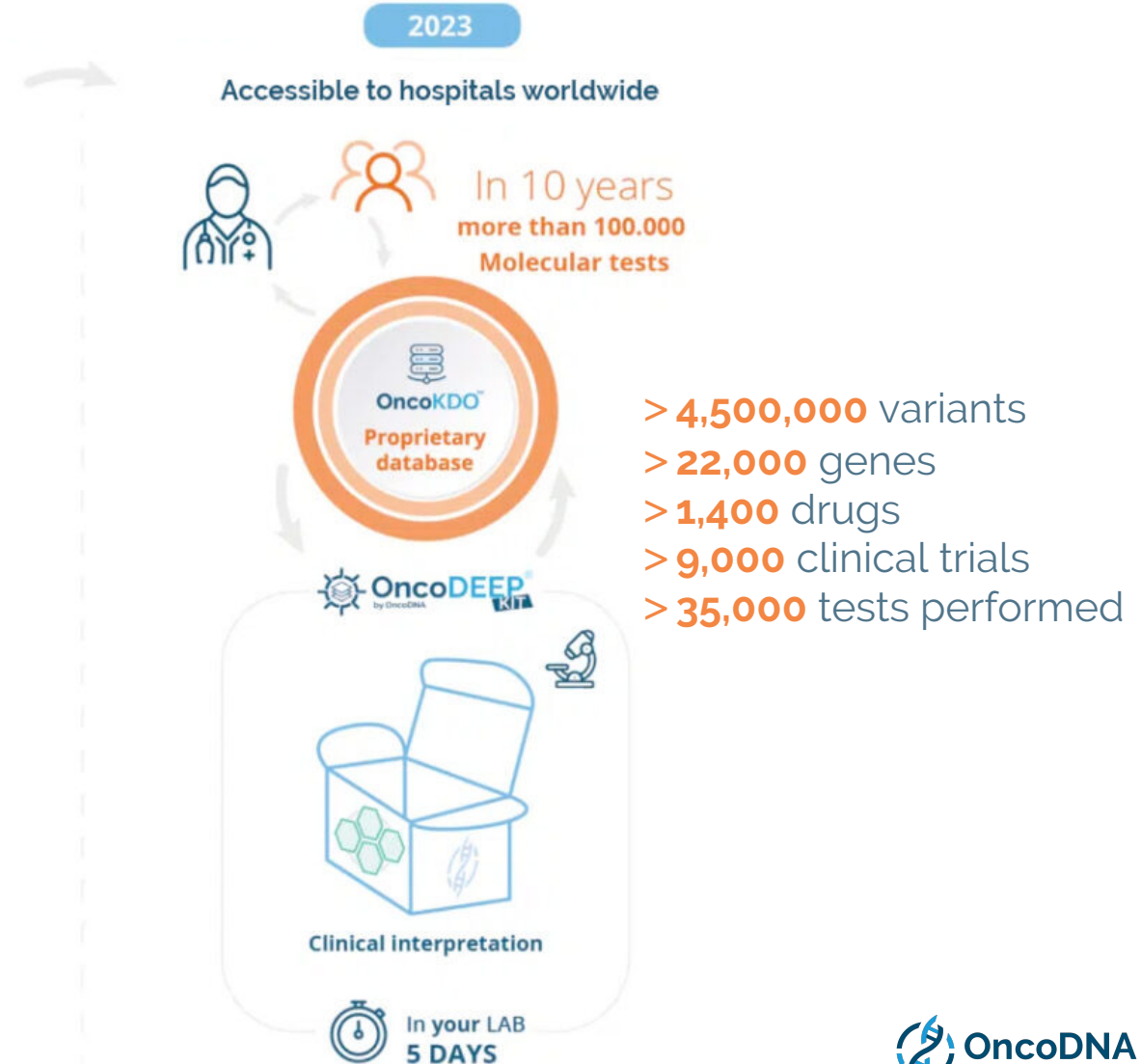


OncoDEEP: Created for Patients by Oncology Experts

More than 10 years
of knowledge
that matters

From DX to KIT

2013



Clinical Support Decision Tools

THE PROFILING RESULTS IN AN INTEGRATED THERANOSTIC REPORT

The screenshot shows the OncoKDM dashboard for a patient case. The main navigation bar includes: DASHBOARD, MEDICAL INFORMATION, DRUGS, COMPREHENSIVE SUMMARY, VARIANTS DETECTION, OTHER BIOMARKERS, CLINICAL TRIALS, QUALITY CONTROL, and BIBL. The 'Medical Information' section shows Patient Case ID: OncoDEEP Kit Demo, Sex: Female, Country: Belgium, Birthdate: 1965/10/12, Cancer: Ovarian cancer, and Medical doctor: Dr Onco. The 'Drugs' section shows FDA approved (6/11/0), Approved for other tumor types (1/0/0), and In development (13/0/0). The 'Comprehensive Summary' section highlights a PIK3CA H1047L variant, noting its oncogenic potential. The 'Variants Detection' section lists 1 Pathogenic, 2 Likely Pathogenic, and 49 Variants of Uncertain Significance (VUS). The 'Quality Control' section shows Total Genes: 646, Aligned Reads: 26723623, Read length (bp): 96, Duplicate (%): 23, Mean Coverage: 314, and Uniformity (%): 99. The 'Clinical Trials' section shows 16 total clinical trials and 4 clinical trials in Belgium. The 'Bibliography' section lists a publication from 2020 Nov 16: 'Primary Cutaneous Desmoplastic Melanoma With Collagen Rosettes and Pseudoglandular Features.'



The screenshot shows the OncoDEEP Analysis Report for a patient with Breast cancer HR. Key genomic alterations include ESRT (p.D538G, 25.00%, Pathogenic, Tier IA), PIK3CA (p.C420R, 50.49%, Pathogenic, Tier IA), BRCA2 (LOH, 1, Likely Pathogenic, Tier IIC), and CCND1 (CNV AMPL, 14, Likely Pathogenic, Tier IIC). Genomic signatures include TMB: Low (8.95 Mut/Mb), MSI: Stable (6.87%), and HRD: Positive (48.0%). Additional biomarkers include AR: Positive (50.0%), CDB: Negative (0.0%), ER: Positive (100.0%), Fusion panel: NO, HER2: Negative (0.0%), p4EBP1: High (100.0%), PD-L1 (22C3 CPS scoring): Low (0.0%), PR: Negative (0.0%), and PTEN: Negative (0.0%). Negatives of interest include BRCA1. Therapies associated with clinical benefit include Alpelisib And Fulvestrant (PI3K inhibitors and antiestrogen), Cyclophosphamide (Alkylating agents), Elicestrant (Estrogen receptor degrader), Fulvestrant (antiestrogen), Olaparib (PARP inhibitors), and sacluzumab govitecan (DNA replication inhibitor).

The focus has always been on data and reporting
 10 years ago:
<https://www.youtube.com/watch?v=HkBXX6fYUEE>

OncoDNA's value...

Team spirit
Continuity
Long term vision Data focus
Confidence Innovation Reliability
Patient centric Hope
Address all stakeholders
Collaboration
Technology is a enabler but not the end

About you...

13
Countries

23
Organisations

34
Roles or
professional
backgrounds

European User Group Meeting

OncoDEEP® Kit



Our Goal? to share and learn

THANK YOU FOR TAKING TIME OUT TO BE HERE!

Introductions

Please share with us ...

- Your name
- Your role
- Where you are from
- What is the one key learning you would like to take away from this meeting?

Name

Role

Organisation

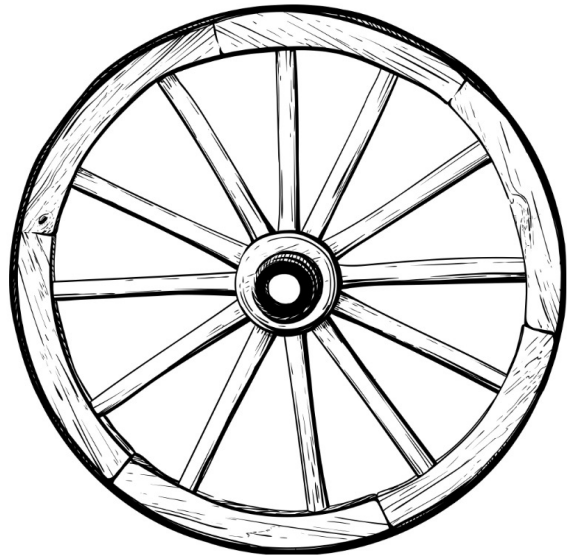
My one key learning that I would like to take away from this meeting...

European User Group Meeting
OncoDEEP® Kit

In summary...



Le'Arn,
SOMETHING
NEW +



*Until
we
meet,
again*



**OncoDNA SA
(Headquarters)**

Rue Louis Breguet 1
BE-6041 Gosselies
+32 (0) 71 18 35 00

**OncoDNA
IntegraGen SA**

Genopole Campus 1 – Bât. 8
5, rue de Henri Desbruères
FR-91000 Evry
+33 (0) 1 60 91 09 00

**OncoDNA
BioSequence S.L.**

Avenida Amado Granell
Mesado N°75, Oficina 8B
ES-46013 Valencia
+43 (0) 96 071 91 34